

KOCH HOMES

CELEBRATING OVER 60 Years OF EXCELLENCE

SALES REPRESENTATIVE

Victor Wazen

Phone: 443-795-4969

Email: vwazen@kochhomes.com

Community: Pondview

Model: The Dayton

Hours: Daily - 11am - 6pm

404 KOSMILL DRIVE
MILLERSVILLE, MD 21108



SOLD: UNDER CONTRACT

\$ 529,900

Square Feet: 2,232 +/-

Bedrooms: 4

Bathrooms: 2.5

Garage: 2 Car

UNDER CONTRACT!

Craftsman style home with stone tapered columns and open floor plan

Commodious kitchen with granite countertops and stainless steel appliances

Gas fireplace with floor to ceiling stone in Great Room

Home Office with large bay window and french

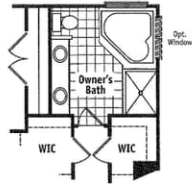
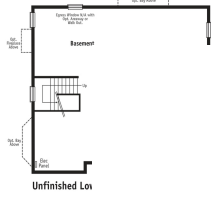
Spacious owner's suite with tray ceiling



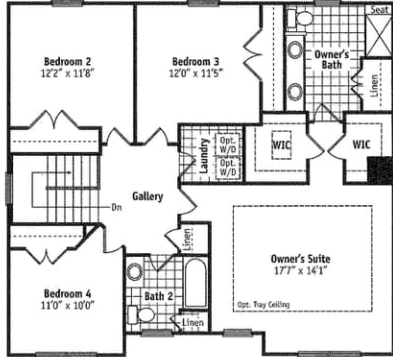
Although all illustrations, specifications, and pricing are correct at time of publication, accuracy cannot be guaranteed. The right is reserved to make changes, without notice or obligation. Windows, doors, and ceilings may vary on the options and elevations selected. 1/14 ANDO 2.0 IECC



MHBR
No. 211

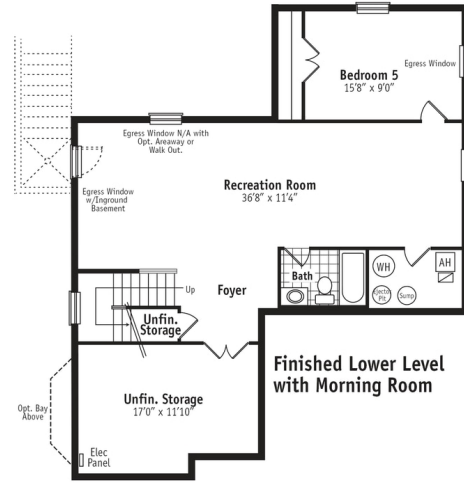


Partial Plan w/Opt. Alternate Bath

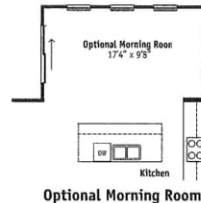


2nd Floor Plan

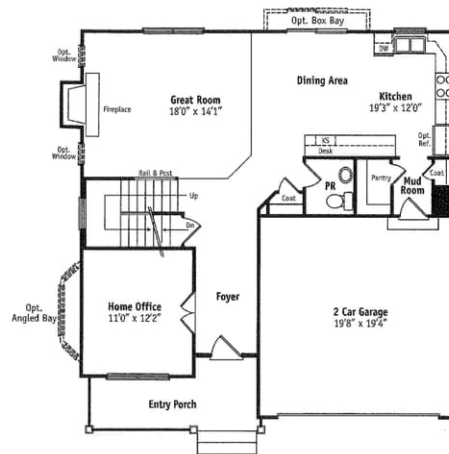
Second Level with Options



Finished Lower Level with Morning Room



Optional Morning Room



1st Floor Plan

Although all illustrations, specifications, and pricing are for informational purposes only, accuracy cannot be guaranteed. The right is reserved to make changes, without notice or obligation. Windows, doors, and ceilings may vary on the options and elevations selected. 1/14 ANDO 2.0 IECC

First Level with Options