

578 JERSEY BRONZE WAY
PASADENA, MD 21122



QUICK MOVE-IN

\$ 519,000

Square Feet: 2,232 +/-

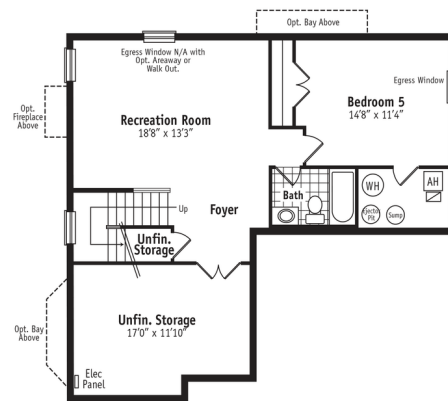
Bedrooms: 4

Bathrooms: 2.5

Garage: 2 Car

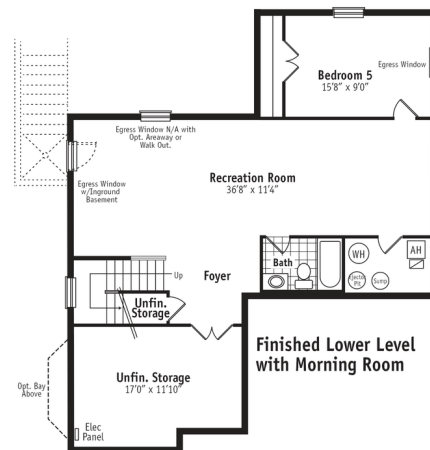
- Craftsmans Style exterior with stone tapered columns
- Sun drenched Morning Room looks out to forest conservation area
- Newly designed Gourmet Kitchen with over-sized island, upgrade granite
- Hardwood floors throughout main level
- Gas Fireplace with floor to ceiling stone in Great Room
- Home Office with large bay window and french doors
- Spacious Owners Suite with tray ceiling
- Upgrade Luxury Owners Bath
- ...

Although all illustrations, specifications, and pricing are correct at time of publication, accuracy cannot be guaranteed. The right is reserved to make changes, without notice or obligation. Windows, doors, and ceilings may vary on the options and elevations selected. 1/14 ANDO 2.0 IECC



Finished Lower Level

Finished Lower Level

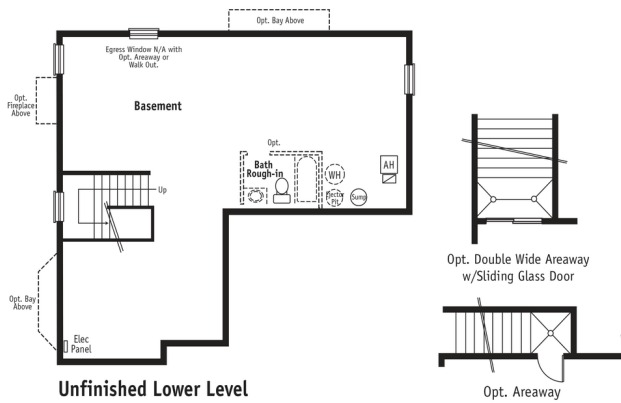


Finished Lower Level with Morning Room

SALES REPRESENTATIVE

Aileen Fields
 Phone: 410-255-9000
 Email: afields@kochhomes.com

Community: Harvest Ridge
Model: The Dayton
Hours: Daily - 10am – 5pm



Lower Level